

3417 HIGHWAY 31S

DECATUR, AL
FOR SALE OR LEASE

Parker
*Real Estate*_{LLC}

PURCHASE \$395,000.00
LEASE \$3500.00 /PER MO



- STRUCTURES: ONE
- SQUARE FOOTAGE: 5,000 SF +/-
- CONSTRUCTION: METAL
- DIMENSIONS: 50' X 100' +/-
- ZONING: B-3 - BUSINESS DISTRICT
- LOT: 2.9 +/- ACRES
- SITE OFFERS EXCELLENT VISIBILITY, EASY INGRESS/EGRESS AND AMPLE PARKING
- RECENT USE WAS A NIGHTCLUB BUT MANY POSSIBILITIES AS SITE IS AMONG A VARIETY OF BUSINESSES WITH A CONCENTRATION OF AUTOMOTIVE RELATED BUSINESSES INCLUDING KIA, FORD, BUICK-GMC DEALERSHIPS, SMITH MOTORS, QUIK LANE AND MORE

Parker
*Real Estate*_{LLC}



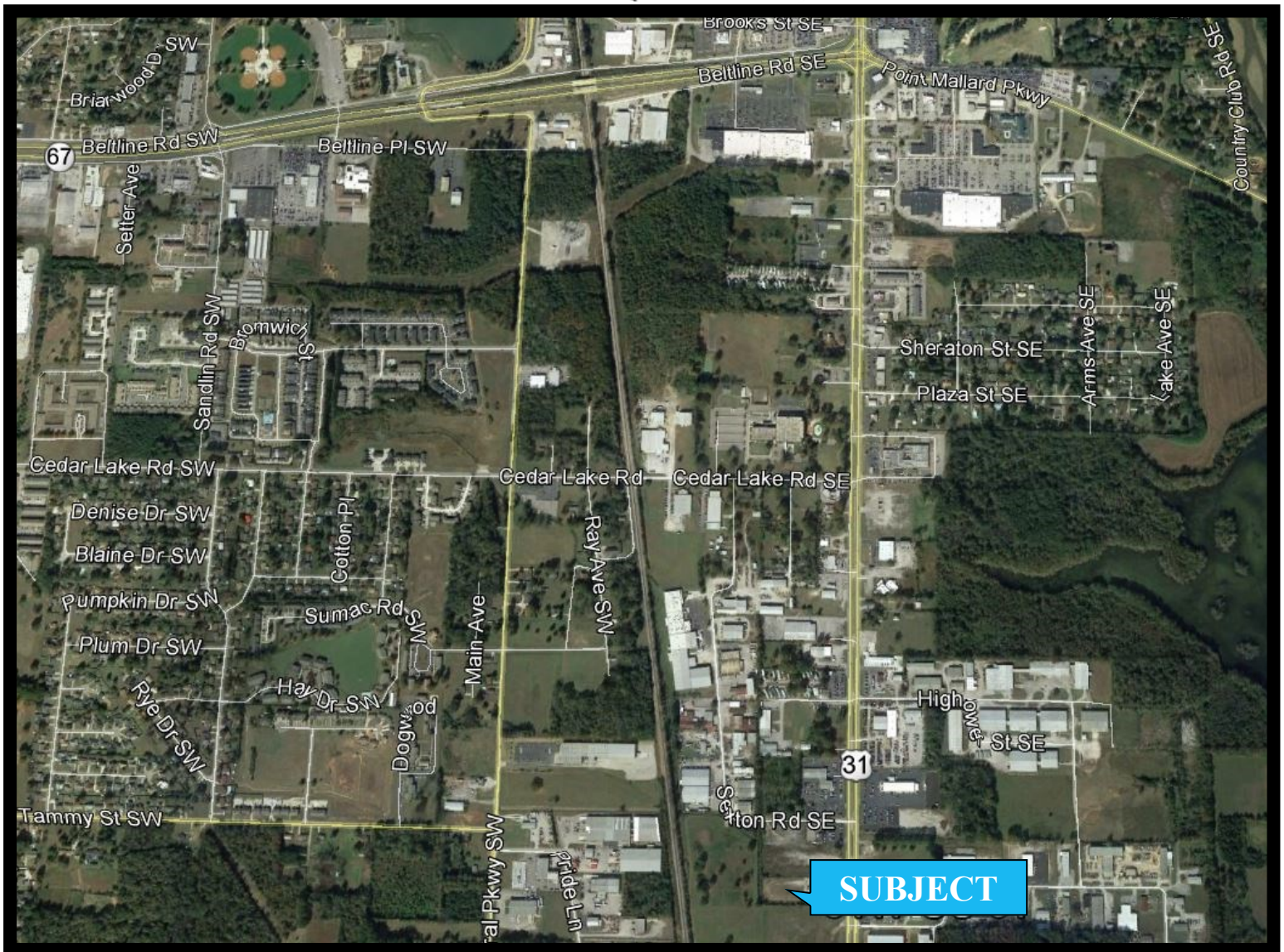
JEFF PARKER, QUALIFYING BROKER
PARKER REAL ESTATE, LLC
401 GRANT STREET, SE - DECATUR AL 35601
256.227.7935c 256.353.1112o
jparker@parker-realestate.com

3417 HIGHWAY 31 S

DECATUR, AL
FOR SALE OR LEASE

Parker
Real Estate^{LLC}

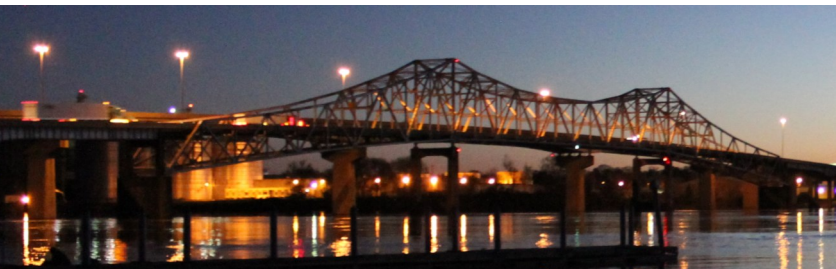
LOCATION



LOCATED ON HEAVILY TRAVELLED HIGHWAY 31 S
CONVENIENT TO BELTLINE, I-65 AND HARTSELLE

Parker
Real Estate^{LLC}

JEFF PARKER, QUALIFYING BROKER
PARKER REAL ESTATE, LLC
401 GRANT STREET, SE - DECATUR AL 35601
256.227.7935c 256.353.1112o
jparker@parker-realestate.com

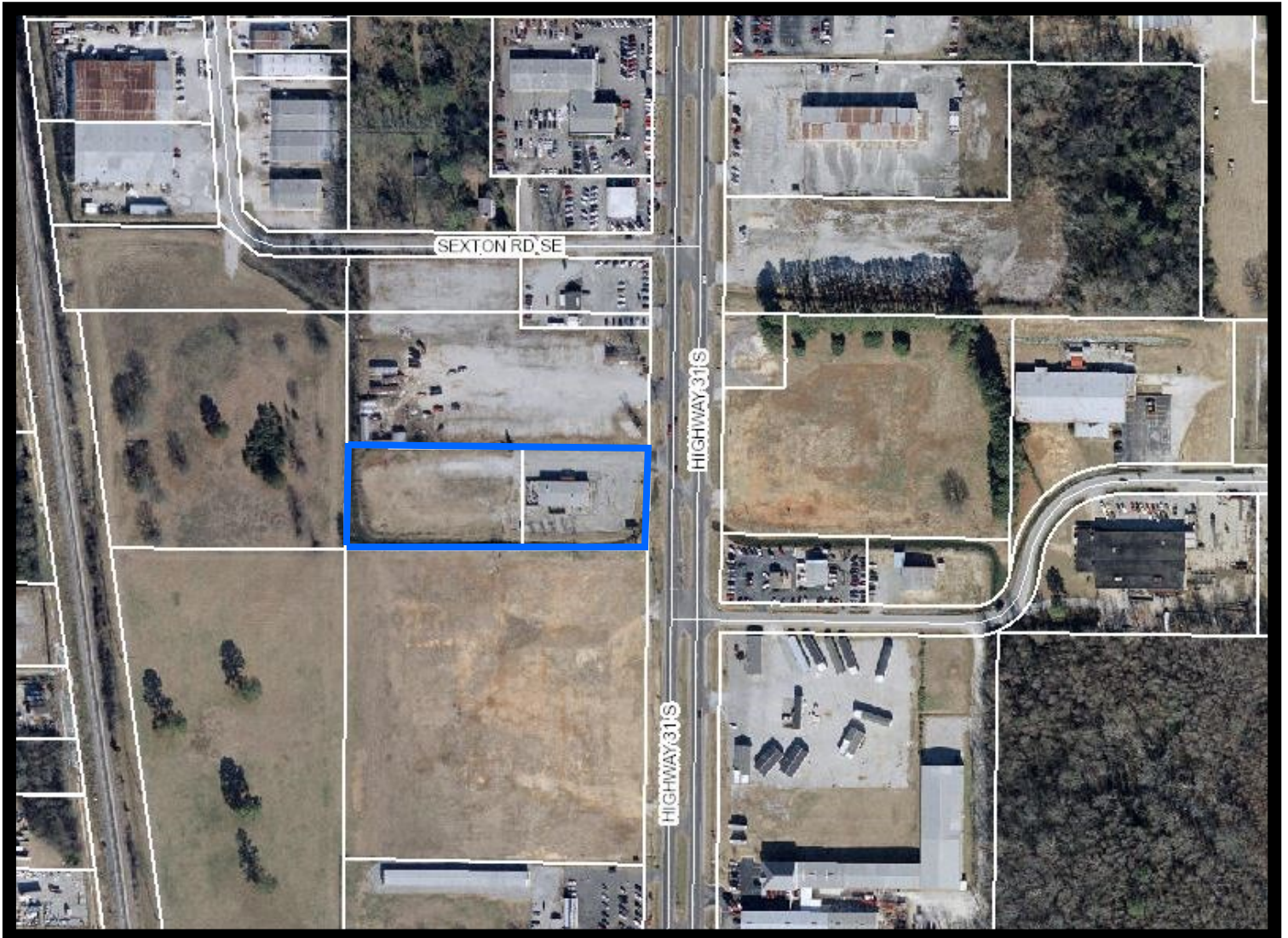


3417 HIGHWAY 31S

DECATUR, AL
FOR SALE OR LEASE

Parker
*Real Estate*_{LLC}

TAX PLAT



Parker
*Real Estate*_{LLC}

JEFF PARKER, QUALIFYING BROKER
PARKER REAL ESTATE, LLC
401 GRANT STREET, SE - DECATUR AL 35601
256.227.7935c 256.353.1112o
jpparker@parker-realestate.com

